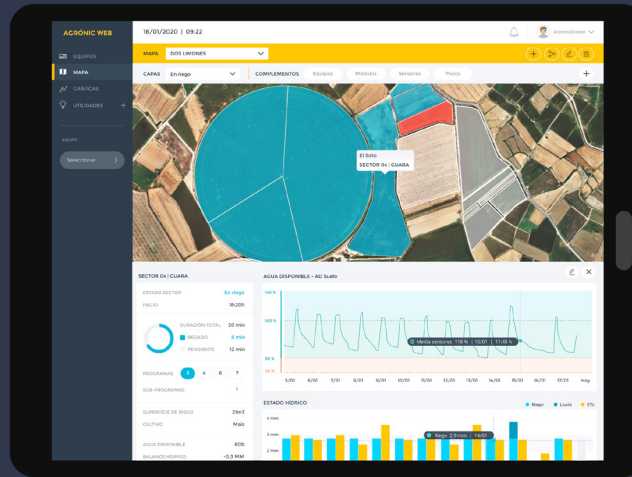


Remote management

# AGRÓNIC WEB



With the new Agrónic Web analyze the data obtained from your installation, and manage the irrigation and fertilization of Agrónic controllers through the computer or tablet.

The Agrónic Web has two types of account.



### Basic account

**Ideal for working with the basic functions of the equipment:** consultation, editing and configuration, with different display options, including maps.



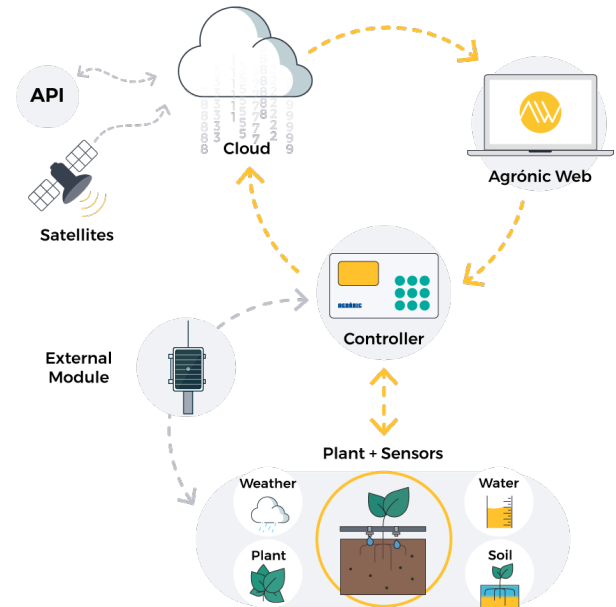
### Professional account

+ 20€  
controller/  
year

**Ideal for manage a big volume of irrigation data and sensors** since, in addition to the functions of the basic account, it incorporates more specific features such as agronomic calculations, unlimited registration and history, more map views, etc.

The Agrónic Web collects information on the status of sensors (soil, plant, weather and consumption) connected to controllers and data from APIs, and processes them to visualize them through graphs and records.

The user can analyze the represented data, and determine and perform the most appropriate type of irrigation for cultivation.



# Functionalities

As in the controller, you can consult, edit and configure:

- Programs
- Sectors
- Pivots
- External modules
- Fertilizers
- Filters
- Fogging
- Water mix
- Sensors
- Determining factors

The screenshot displays the 'PROGRAMAS' section of the AGRÓNICO WEB interface. The main area shows 'PROGRAMA 2' in 'EN RIEGO' status. It includes a calendar for 'enero/febrero de 2017' and a detailed view of 'EN RIEGO HOY' with sub-program settings (e.g., 100 mg, 3 sectores, 4 fertilizantes) and a bar chart for 'Fertilización' (F1-F4). The 'ÚLTIMOS FACTORES APLICADOS' section shows 'Factor de riego: 5%' and 'Factor fertilizante: 15%'. The 'CONDICIONANTES' section includes 'Condicionante 1' (Humedad: 20%) and 'Condicionante 2' (Estado: 2320 Wh/m²). A 'REGISTRO' table at the bottom shows activity logs with columns for 'Fecha', 'Hora', 'Descripción', and 'Anomalías'.

The screenshot shows the 'EQUIPOS' section of the AGRÓNICO WEB interface. It features a table with columns: 'Estado', 'Nombre equipo', 'N° serie', 'Tipo', 'N° programas', 'N° sectores', and 'Anomalías'. The table lists various equipment such as 'Palo sistema', 'En riego', 'No conectado', 'En avería', and 'No riego' with their respective details.

Estado	Nombre equipo	N° serie	Tipo	N° programas	N° sectores	Anomalías	
●	Palo sistema	A25 - Badina	20	A2500	2	22	0
●	En riego	A4 - Peralta	4158	A4000	1	54	0
●	No conectado	A4 - Alto Olivos	1759	A4000	10	1	0
●	En riego	El Soto	16	A2500	8	35	1
●	En riego	Solríos	6484	A5500	2	9	0
●	No conectado	Almacén Río	321	A2500	3	12	0
●	En avería	Adormidera	64	A5500	20	22	1
●	No riego	Finca Litera	874	A4000	1	8	0
●	En riego	Carles A-2500	61	A2500	1	02	0
●	Para sistema	Peñafar gaxeo almendros	327	A2000	10	15	2
●	No conectado	Ascona	645	A2500	8	20	0
●	No riego	Candenasvas	1678	A4000	35	80	0



Through **notifications of breakdowns and important records** you know everything that happened in the controller.

## Manual orders

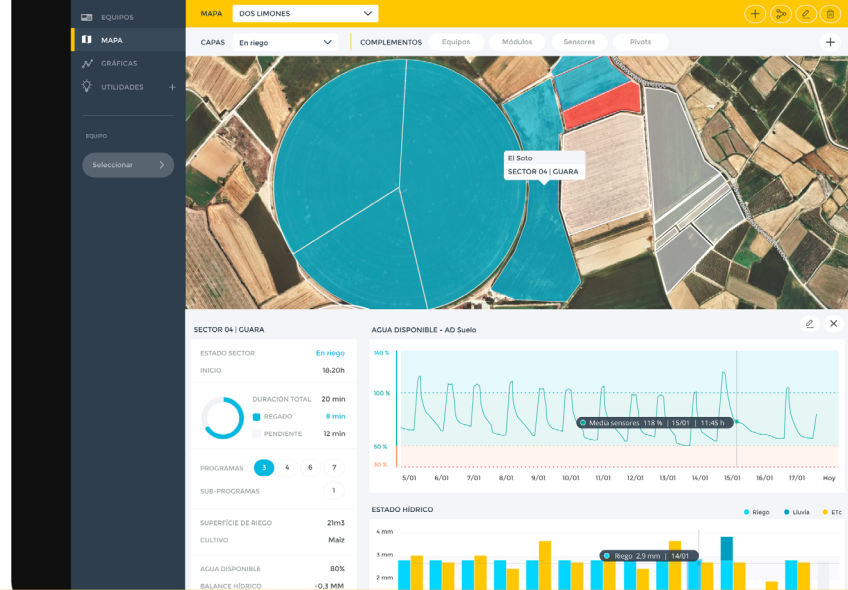
It allows **direct manual orders** to start or stop, leave out of service or suspend programs, sectors, determining factors, filters, fogging, pivots and controller in general.

## Map

All information about the installation on a single screen. You can create facilities maps and check the status of sectors, external modules, sensors and pivots, and act on all of them.

## Record and history

Registration and history of the data of the last 7 days in basic account, and **unlimited registration and history** for the professional account.



## Generated calculations

The Agronic Web converts the data received by the sensors into type calculations:



Water available



Vapor pressure deficit



Evapotranspiration (ETo)



Hydric balance



SOON

Dew point




AVAILABLE FOR PROFESSIONAL ACCOUNT

## Multi-user management

The main user can create several sub-users to give them different permissions (consult, edition and configuration) on the controllers they choose.

## Graphics

Graphs by sector of the state of the hydric balance (ETc - Applied irrigation - Rain) and of the available water (soil water content sensors, relativized).



The Agrónic Web is available for the Agrónic 2500, Agrónic 4000 v3, Agrónic 5500, Agrónic 7000 and Agrónic Bit controllers.

Check the necessary steps to manage the controller from the Agrónic Web in:  
[progres.es/en/stepstofollow](https://progres.es/en/stepstofollow)

**MORE INFORMATION  
IN PROGRES.ES**

Polígono Industrial, C/ de la Coma, 2  
25243 El Palau d'Anglesola | Lleida | España  
Tel. (+34) 973 32 04 29 | [info@progres.es](mailto:info@progres.es)

**[www.progres.es](https://www.progres.es)**